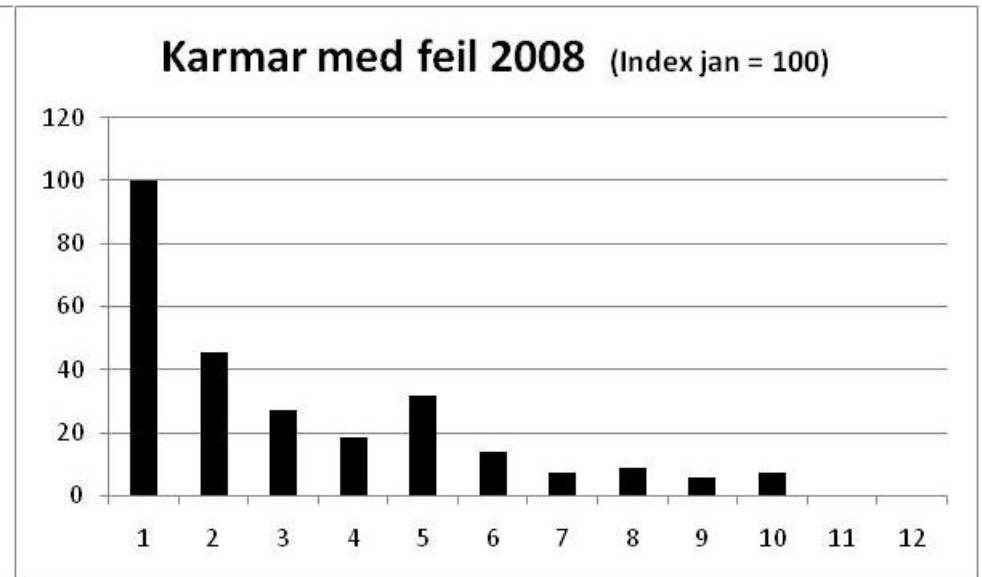
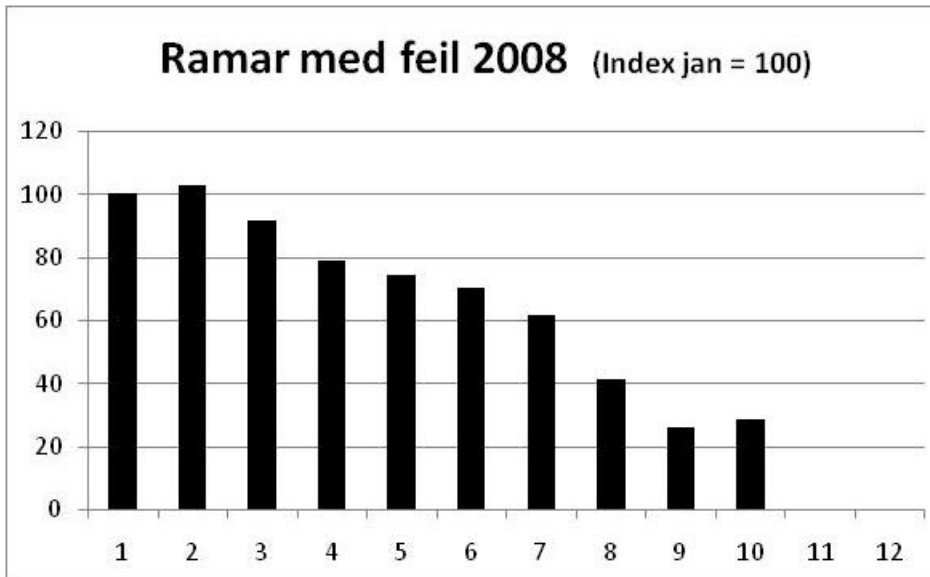
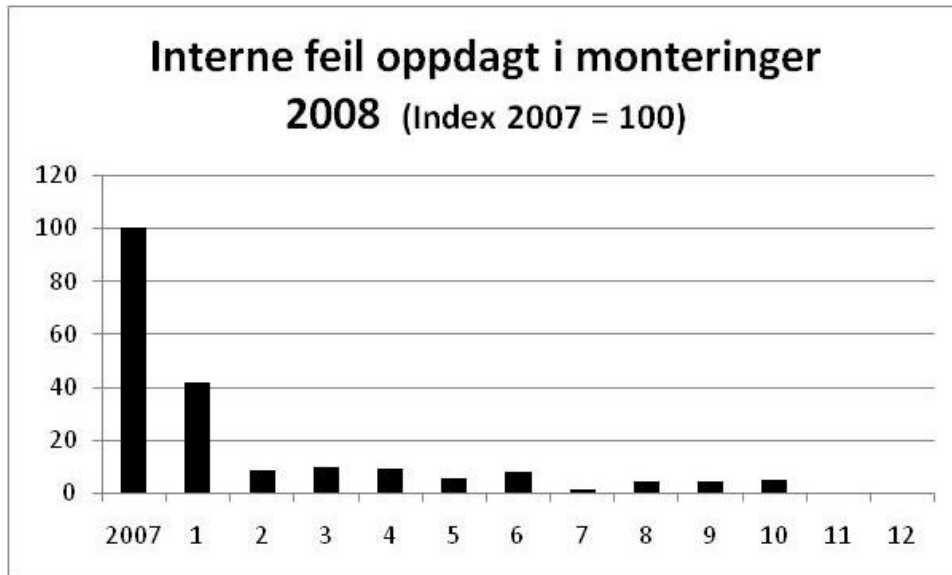
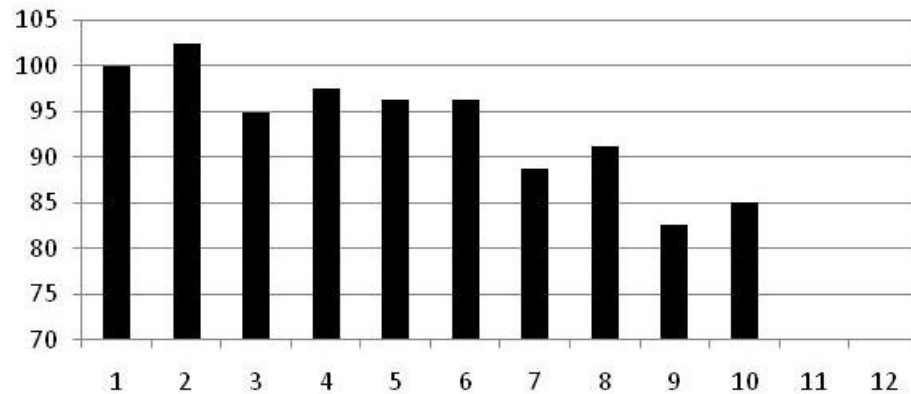


Resultat forbedringsarbeid Gilje trevarer – Mindre feil

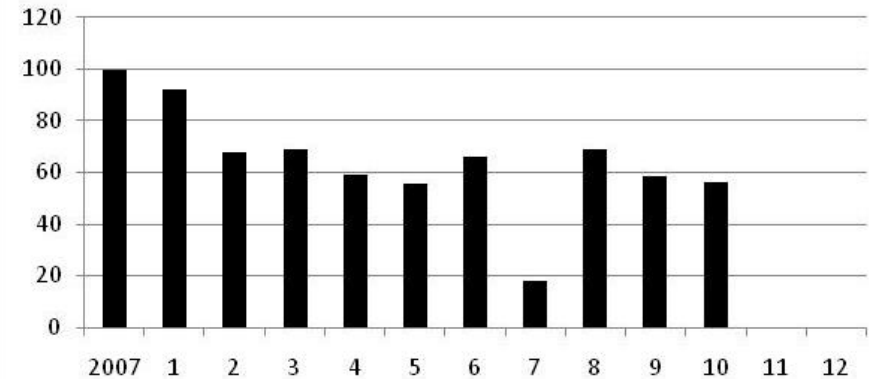


Resultat forbedringsarbeid Gilje trevarer – Kostnader

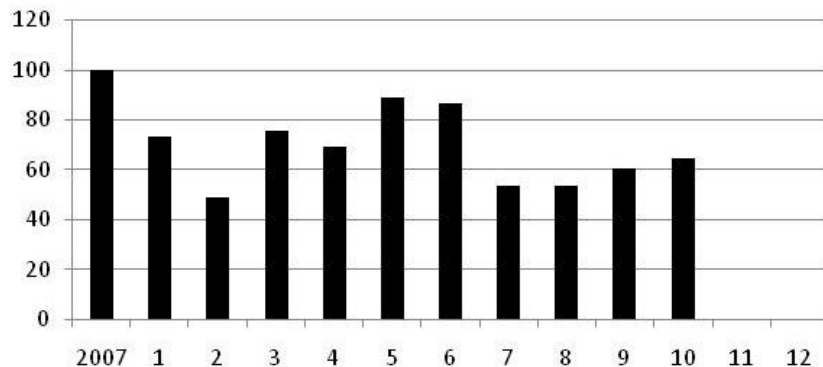
Effektivitet Malingsavdeling - Mantid per oppheng 2008 (index jan = 100)



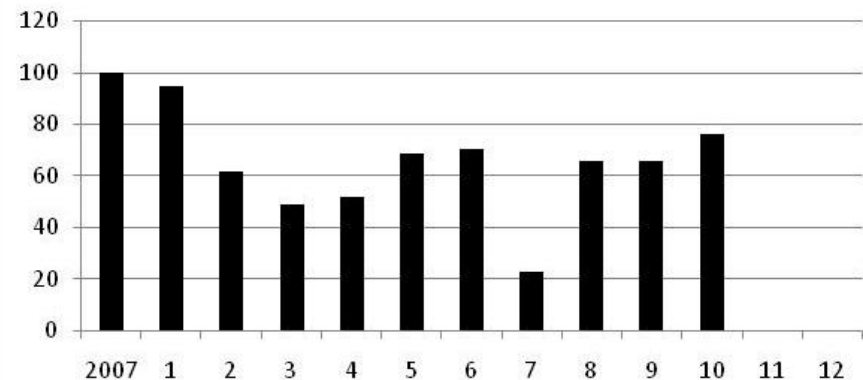
Kassasjonskostnader Karm 2008 (Index 2007 = 100)



Reklamasjon under garantitid 2008 (Inkludert produksjon innen GPS) (Index 2007 = 100)

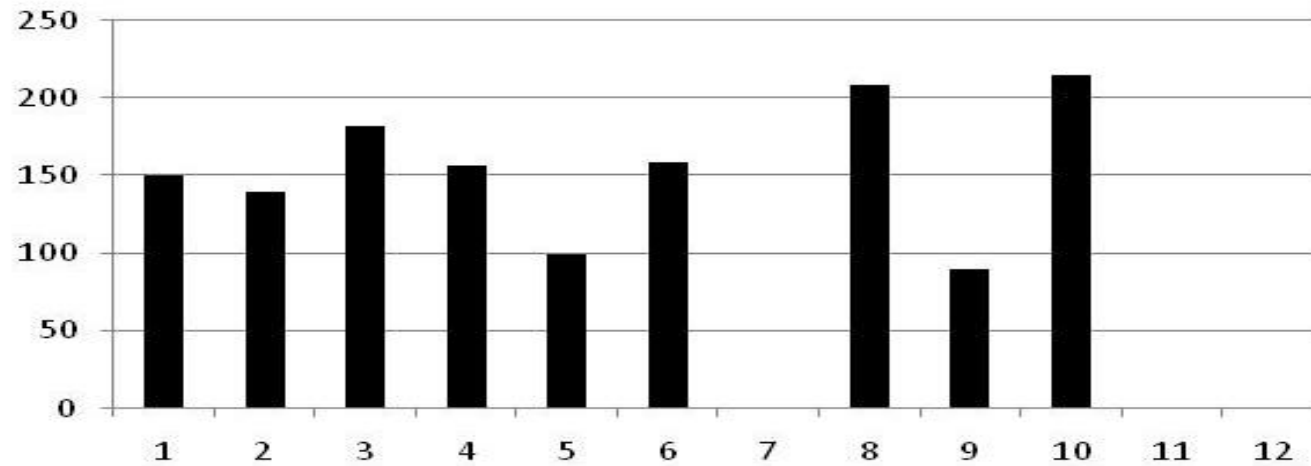


Kassasjonskostnader Ram 2008 (Index 2007 = 100)

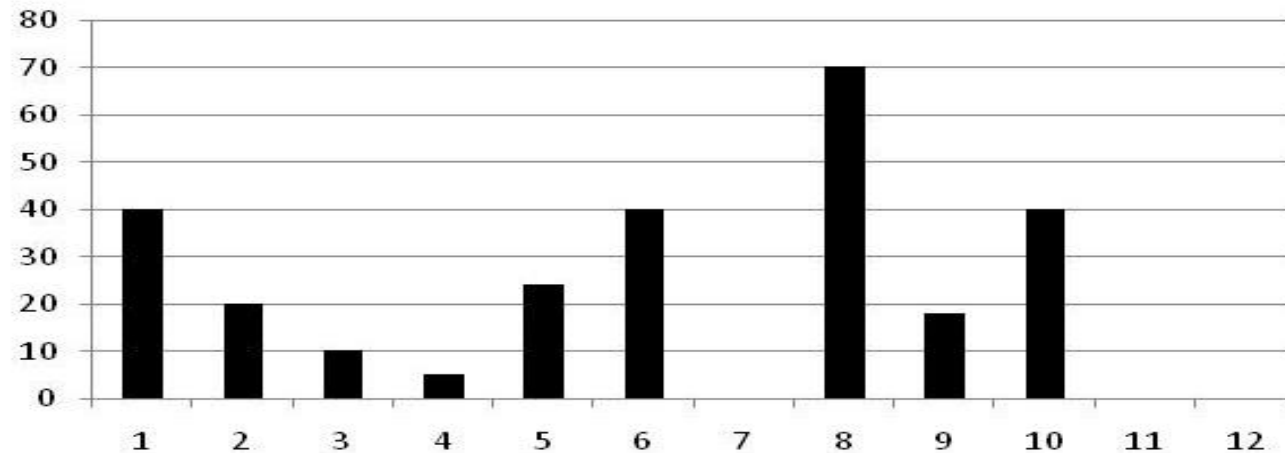


Resultat forbedringsarbeid Gilje trevarer – GPS Prosesse

Antal forbedringer per måned 2008



Antal EPL per måned 2008



[Åter Meny](#)